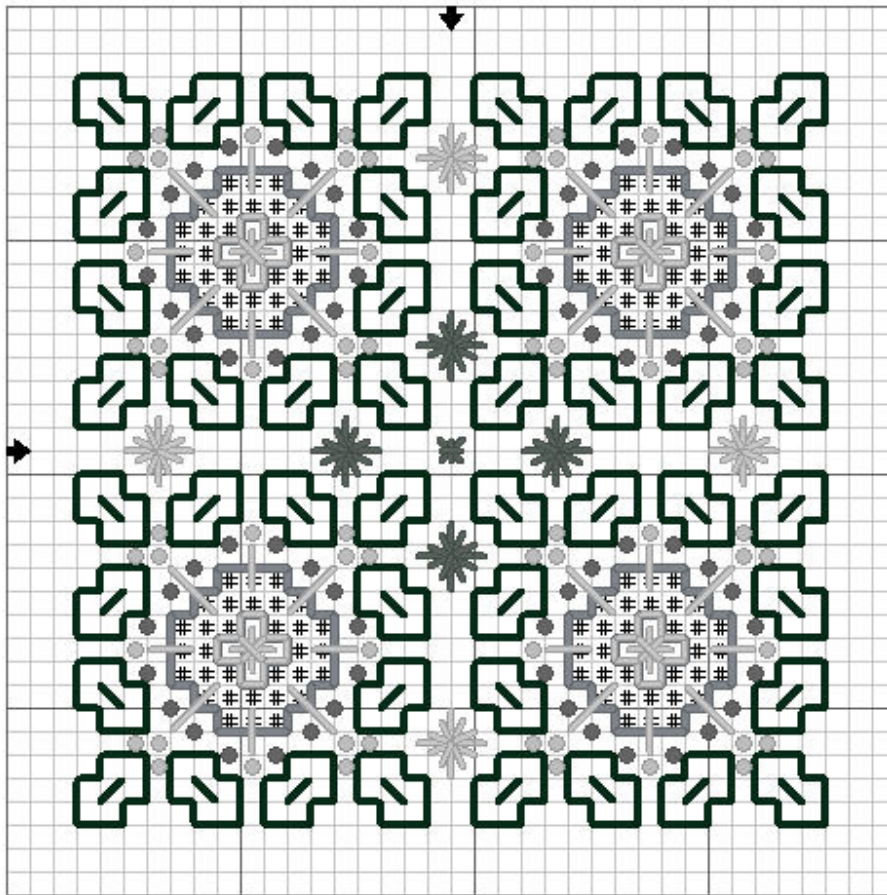


Tor Rhuann Designs

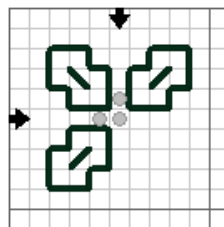
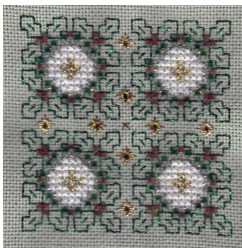
Wreath Biscornu

2010 Ornament

This design features candles in a wreath of holly. It was designed as a biscornu but may be finished in any desired fashion. I've included models for two colorways, but there are many other possibilities.



Stitch count: 32x32



biscornu base corner



Please feel free to select your own color scheme. I love to see other stitchers' imaginings of my designs! Also, if you wish your finish to be included in my gallery, please do drop me a line, or visit Tor Rhuann on Facebook at <http://www.facebook.com/TorRhuannDesigns/>

(c) 2010 Tor Rhuann Designs

<http://www.tor-rhuann-designs.com>

clioratha@hotmail.com

Tor Rhuann Designs

	Model 1 (white)	Model 2 (Advent)
Fabric:	25ct moss green lugana	25ct white pearl linen
#	Splendor S802 (white)	Au Ver a Soie 1343 (purple) Soie d'Alger 1042 (rose)
Black	Petite Treasure Braid PB20 (green)	Petite Treasure Braid PB20 (green)
Dark grey	Petite Treasure Braid PB45 (Christmas)	Petite Treasure Braid PB45 (Christmas)
Medium grey	Petite Treasure Braid PB70 (silver)	Petite Treasure Braid PB66 (purple) / PB64 (rose)
Light grey	Petite Treasure Braid PH01 (gold)	Petite Treasure Braid PH01 (gold)
Dark grey bead	Delica DB275 (green)	Delica DB275 (green)
Light grey bead	Delica DB062 (cranberry)	Delica DB105 (metallic red)

Advent biscornu finished with Mill Hill Crystal Treasures 13101 as candle flames.



Biscornu finishing instructions may be found on many sites online, including an excellent illustrated tutorial at <http://www.annettesacre.com/lessons/biscornu.html> .