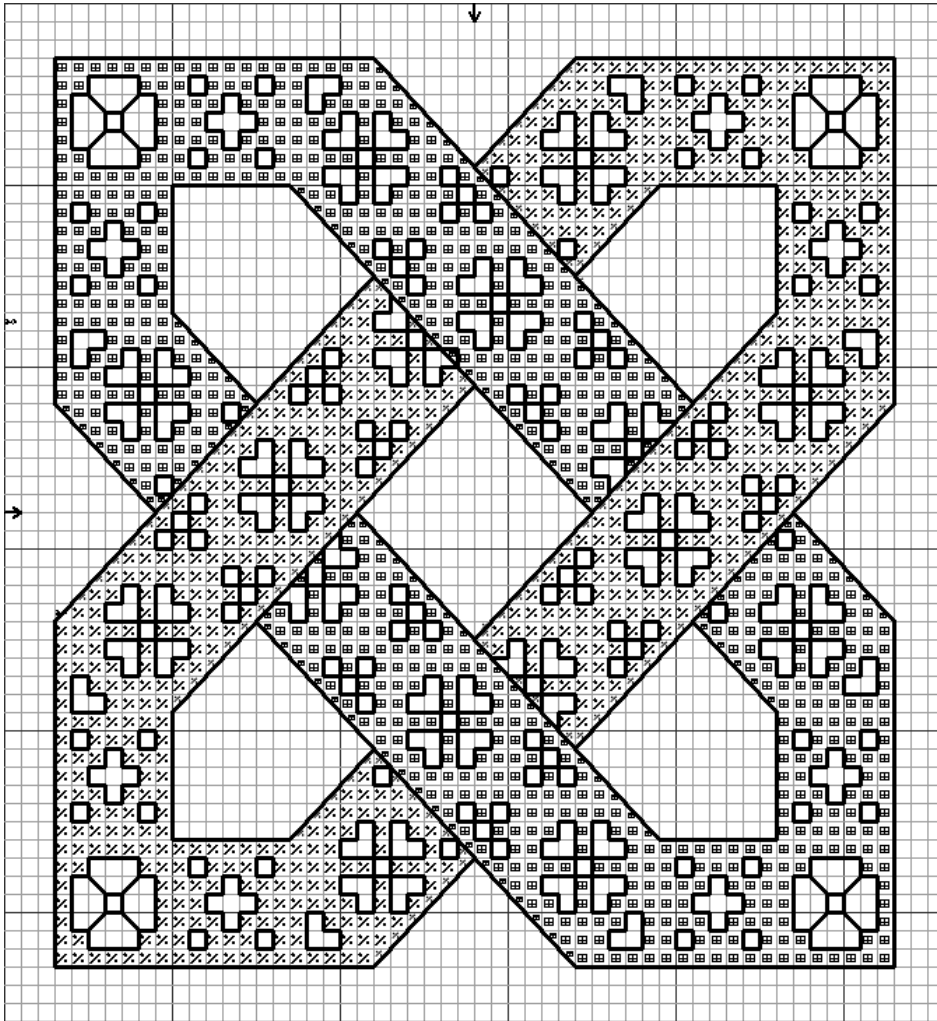


# Assisi Knot

*For Rhuann Designs*



Stitch Count: 50w X 50h

Symbol	DMC	Color
/	209	Lavender-DK
%	826	Blue-MD
bs	208	Lavender-VY DK
bs	825	Blue-DK

Use DMC 208 for backstitching the purple link, and DMC 825 for the blue link.

This could be adapted to any colorway.



*Designed by Cloratha © 2006*